

Exploring the Journeys of Women in STEM Careers

May 28, 2025

IF/THEN®

CHAMPIONS NETWORK



Welcome!

Share in the chat: How have you integrated role models into your programming?



Agenda

- Introductions
- Network Welcome & Goals
- Network Structure & Activities
- Role Model Journeys & Experiences
- Network Members Share & Questions
- Upcoming Network Opportunities



Emily Early
Senior Program Manager



Brenda Britsch
**Director of Research and
Evaluation**



Kata Lucas
Senior Researcher



The vision of the National Girls Collaborative Project is to **support and create STEM experiences that are as diverse as the world we live in.**

NGCP Resources:

- National Webinars
- Monthly Newsletter
- Website featuring research and statistics related to girls and women in STEM
- Partner Projects





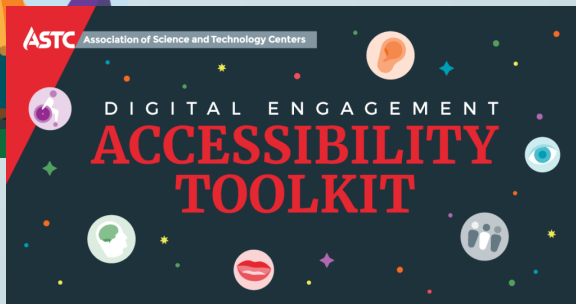
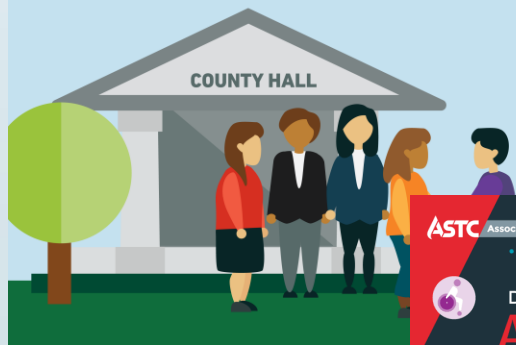
Amanda Fisher
Assistant Director of Programs



ASTC **creates strategic opportunities, develops intellectual capital, and assembles resources** to support our members in realizing their missions and engaging their communities.

CIVIC ENGAGEMENT AND POLICY MAKING

- Funding opportunities
- Annual conference and convenings
- Professional learning & development





IF/THEN® Champions Network

Goals

Join a growing movement of institutions and individuals **committed to advancing gender equity within STEM fields** via the IF/THEN® Collection.

The network goals are to **activate and grow a network** of museums and individual members that will champion gender equity work, support the overall goals of the IF/THEN® initiative, provide mutual support, and act as institutional resources for others.



The **IF/THEN® Collection** is the largest free resource of its kind dedicated to increasing access to authentic and relatable images of real women in STEM.

The Collection is part of the [IF/THEN®](#) Initiative, a national effort sponsored by [Lyda Hill Philanthropies®](#) to inspire young girls to pursue STEM careers while creating a culture shift in how the world perceives women in STEM.



Membership Levels

Individual



For **educators, exhibit developers, and others** who support the IF/THEN® initiative but may not be housed within an organization or who have not yet obtained an organizational commitment.

Individual members do not need to belong to an ASTC member organization or be in the United States to join.

Organizational



For **ASTC member organizations** in the US, including museums, science centers, and allied members.

Organizational members are required to complete the organizational commitment form. This is a high-level commitment that acknowledges the specific requirements that accompany organizational membership.

IF/THEN®

CHAMPIONS

NETWORK

Member Activities

Quarterly Webinars

- February, May, July, and October 2025
- Will also be hosting a few virtual member meetups!
- PD, guest speakers

Suite of Resources

- IF/THEN® Collection, Project Library, Gender Equity Toolkit
- Media Toolkit
- LinkedIn Group

ASTC Annual Conference

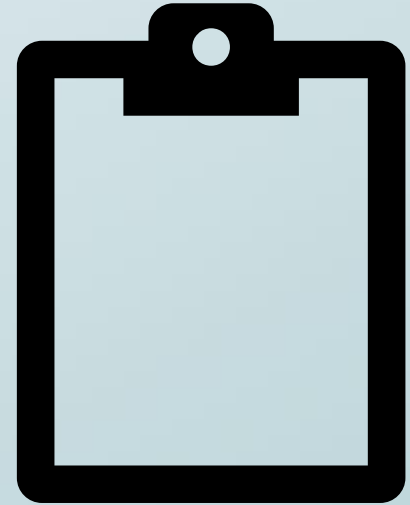
- September 6-9, 2025, in San Francisco, CA
- Hosting a session, event, and booth (exact activities TBD)

Email Communications

- Network updates
- IF/THEN® Collection highlights and updates
- Engagement opportunities

Annual Survey – Extended Until May 30

- Online survey to collect feedback from Network Members about your involvement in the Network
- Help us advocate for growth and continued funding for the Network!
- Responses are anonymous unless you choose to provide identifying information
- We encourage everyone in the Network to complete the survey!



The background is a solid teal color. It is decorated with abstract line art in two shades: a darker teal and a lighter, olive-green teal. The lines are thin and vary in length and orientation. Some are straight, while others are curved. Small circular dots, matching the line colors, are placed at the ends of the lines and at some of the points where lines intersect or cross. The overall effect is a modern, geometric, and somewhat organic pattern.

Role Model Journeys & Experiences Featuring IF/THEN[®] Ambassadors



Dr. Jessica Esquivel



Dr. Mitu Khandaker



Dr. Samantha Thi Porter

HI, I'M MITU!

Dr. Mitu Khandaker

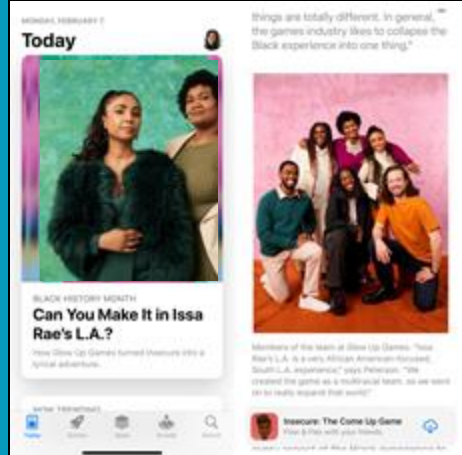
Game Developer

Professor

Advocate



NYU GAME CENTER



GLOWUP GAMES



She/Her

BBC

TWO Coding: The Future is Creative

Home Clips Learning Zone Home

Coding and games development

Chloe meets BAFTA 'Breakthrough Brit' and games developer Mitu Khandaker to see her first game Redshirt™ in action.

Show...



Showing that Games are for Everyone

... and Anyone Can Make Games!



Challenges & Opportunities

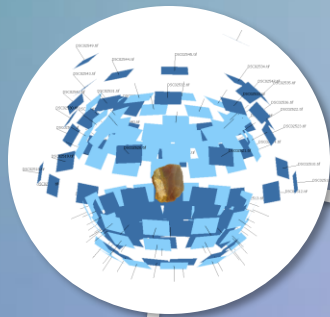
1. Game Development: A Toxic Industry?



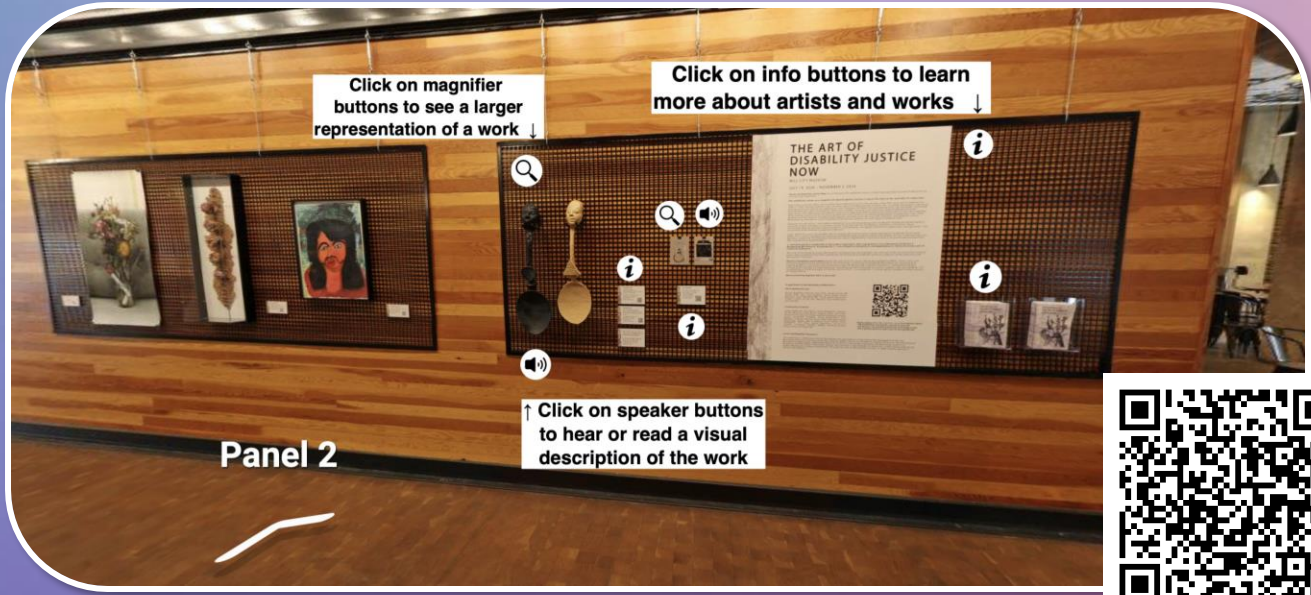
2. Mid-Late-Career Imposter Syndrome

3. Championing DEI in 2025...

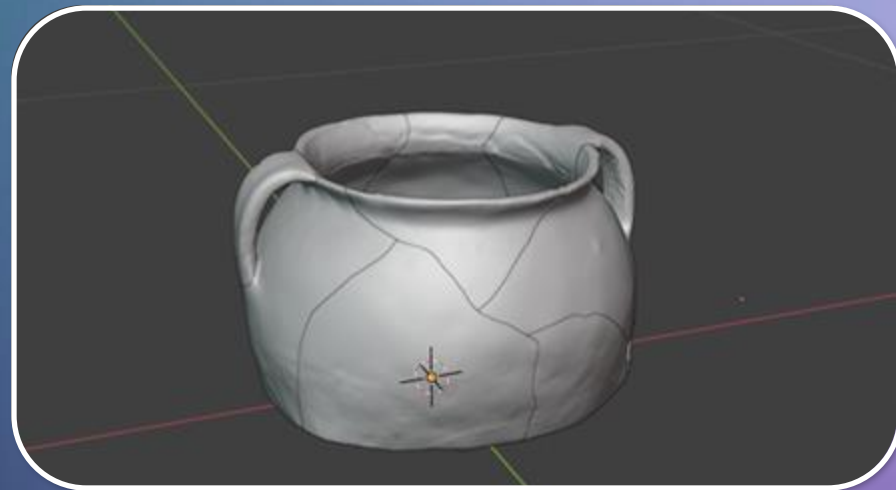




Dr. Samantha Thi Porter
Digital Archaeologist, UMN







Thank you!

@SamScansStuff

www.stporter.com

port0228@umn.edu



Opportunities For Organizational Members

Opportunities for Organizational Members

Kits!

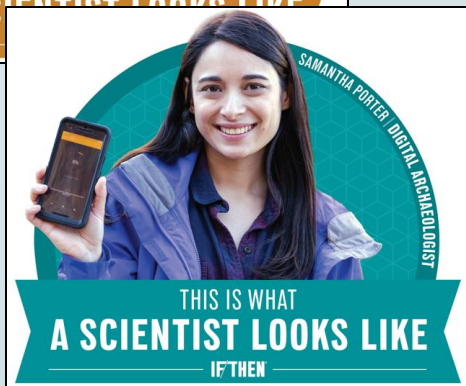
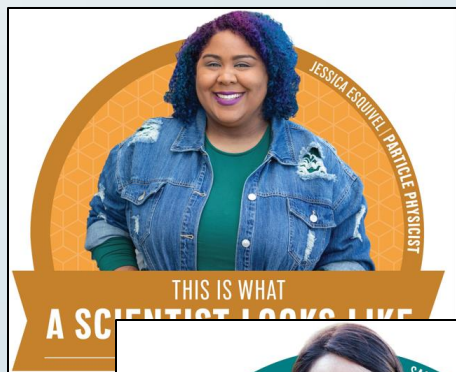
Stipends!

Travel Awards!

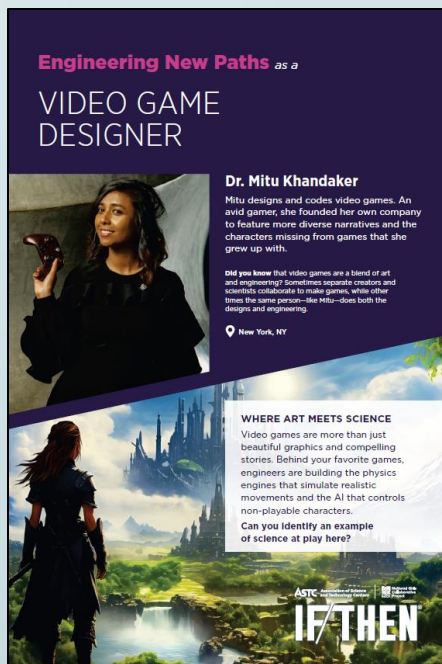


Opportunities for Organizational Members

Welcome Kits



Kit 1: This is What a Scientist Looks Like



Kit 2: STEM Play Workshops



Exhibit Kit 1: This is What a Scientist Looks Like

- Select a **format** (pop-up banners, metal prints, foam core posters)
- Select **content themes** (Marine Biology, Ecology, Aerospace, Engineering, or Planetary Health)
- We print and ship directly to you
- Submit your request anytime this year. Requests processed within 3 - 4 weeks.



Exhibit Kit 2: STEM Play Workshops

Open soon- Order by July 7!

- 30 kits available
- 3 table-top components per kit
- Designed for young learners
- Request with tables or install in your own space



Exhibit Kit 2: STEM Play Workshops



Exhibit Kit 3: RFP Open Now

Help us design the next IF/THEN Kit!

- Accepting proposal for individual or organization to do content development + fabricating and shipping
- Up to \$207,000 to produce 50 – 60 kits
- Proposals due **July 10**
- View [the full RFP](#) to learn more



Program & Events Stipends

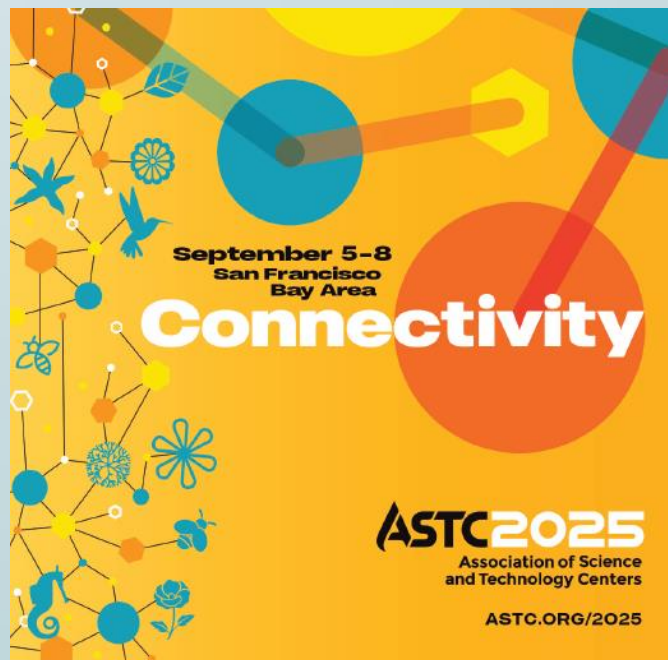
- Request one **stipend of up to \$750**
- Use funds to **showcase IF/THEN® Ambassadors through your programs, events, or spaces**
- **Submit your request** during one of these open cycles:
 - Cycle 2: Due June 15, 2025
 - Cycle 3: Due August 1, 2025



ASTC Annual Conference Funding

September 5-8, 2025
San Francisco Bay Area

- Request conference registration (\$755 value), travel stipend (up to \$1,500), or both
- Organizations may nominate **one individual** who is part of your Champions Network team
- Must attend a preconference session on Friday, Sept 5
- Applications **due June 19**
- Decisions by July 14



Opportunities for Organizational Members

Opportunity	Request by/Due
Welcome Kits	Anytime
Kit 1: This is What a Scientist Looks Like	Anytime
Program Stipend \$750	Anytime
ASTC Conference funding	June 19
Kit 2: STEM Play Workshops	July 7
Kit 3: Submit Proposal to Develop and Fabricate	July 10

Reach out to ifthen@astc.org with questions!





Resources and Upcoming Activities

Resources

Access resources at: <https://ngcproject.org/ifthen-champions-network>

- Links to IF/THEN® Initiative and Collection resources
- Instructions for requesting and downloading assets
- Media and branding guide
- Link to join the LinkedIn Group
- Details about upcoming webinars and an archive of past webinar recordings
- Details about network communications and an archive of past email communications



Upcoming Activities

■ 2025 Network Webinar Schedule

- July 16, 2025
- October 22, 2025 (topic TBD)
- All webinars are 11 AM PT / 12 PM MT / 1:00 PM CT / 2:00 PM ET

■ 2025 Virtual Meetups – informal networking

- October 1, 2025

■ 2025 Annual ASTC Conference: September 6-9, 2025, in the San Francisco Bay Area – mark your calendar now!



Questions?

You can also email questions to
Emily Early at early@ngcproject.org

