

Welcome to the IF/THEN® Champions Network!

July 24, 2024

IF/THEN®

CHAMPIONS NETWORK



Welcome!

Share in the chat: Name, organization (if applicable),
and where you are joining from!



Agenda

- Introductions
- Network Welcome & Goals
- Network Structure & Activities
- IF/THEN® Initiative & Collection
- Network Sharing
- Upcoming Activities
- Questions



Emily Early
Senior Program
Manager



Tara Cox
Senior Manager,
Programs and
Partnerships



Maggie Ewan
Manager, Digital
Operations

IF/THEN®

CHAMPIONS
NETWORK



The vision of the National Girls Collaborative Project is to **support and create STEM experiences that are as diverse as the world we live in.**



NGCP Resources:

- National Webinars
- Monthly Newsletter
- Website featuring research and statistics related to girls and women in STEM
- Partner Projects





Shannon Sullivan
Senior Manager of
Programs



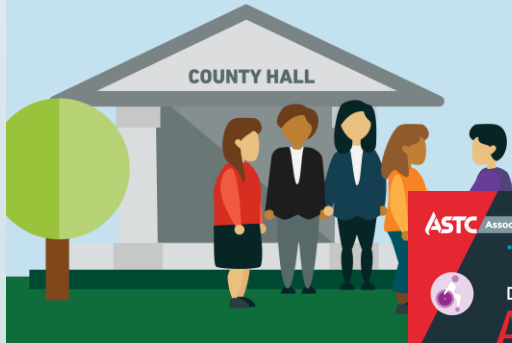
Amanda Fisher
Associate Director
of Programs



ASTC **creates strategic opportunities, develops intellectual capital, and assembles resources** to support our members in realizing their missions and engaging their communities.

CIVIC ENGAGEMENT AND POLICY MAKING

- Funding opportunities
- Annual conference and convenings
- Professional learning & development



Network Management

ASTC

- Champions Network is an ASTC project, in collaboration with NGCP
- Lead for organizational funding opportunities, including developing display materials (e.g. Welcome Kit)
- Contact ASTC at ifthen@astc.org

NGCP

- Lead day-to-day operations of the Champions Network
- Lead webinars, communications, planning sessions for organizational members, ASTC conference activities, and manage resources
- Contact NGCP at early@ngcproject.org



The background is a solid teal color. It features several abstract network diagrams in white and light teal. These diagrams consist of nodes (small circles) connected by lines. Some lines are straight, while others are curved, creating a sense of interconnectedness and flow. The diagrams are scattered across the page, with some appearing more prominent than others.

IF/THEN® Champions Network

Goals

Join a growing movement of institutions and individuals **committed to advancing gender equity within STEM fields** via the IF/THEN® Collection.

The network goals are to **activate and grow a network** of museums and individual members that will champion gender equity work, support the overall goals of the IF/THEN® initiative, provide mutual support, and act as institutional resources for others.



Membership Levels

Individual



For **educators, exhibit developers, and others** who support the IF/THEN® initiative but may not be housed within an organization or who have not yet obtained an organizational commitment.

Individual members do not need to belong to an ASTC member organization or be in the United States to join.

Organizational



For **ASTC member organizations** in the US, including museums, science centers, and allied members.

Organizational members are required to complete the organizational commitment form. This is a high-level commitment that acknowledges the specific requirements that accompany organizational membership.

IF/THEN®

CHAMPIONS

NETWORK

Member Activities

Quarterly Webinars

- May, July, and October 2024
- 2025 webinar schedule to be shared in late 2024
- PD, guest speakers

Suite of Resources

- IF/THEN® Collection, Project Library, Gender Equity Toolkit
- Media Toolkit
- LinkedIn Group

ASTC Annual Conference

- September 28 - October 1, 2024
- Preconference Session on September 27, 9am – 1pm
- Reception

Email Communications

- Network updates
- IF/THEN® Collection highlights and updates
- Engagement opportunities

Additional Activities for Organizational Members

Organizational Planning Sessions

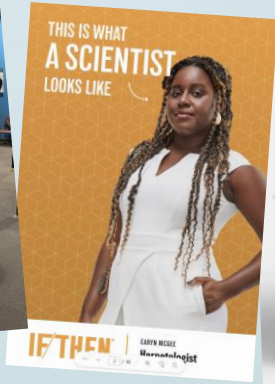
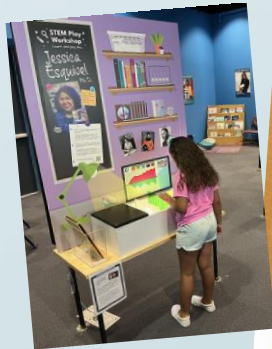
- Examine organizational strengths and goals for advancing gender equity

Welcome Kit

- IF/THEN®-branded materials to display at your organization

Funding Opportunities

- ASTC conference funding, exhibit content, and IF/THEN® exhibit and program grants





IF/THEN® Initiative and Collection

The **IF/THEN® Collection** is the largest free resource of its kind dedicated to increasing access to authentic and relatable images of real women in STEM.

The Collection is part of the [IF/THEN®](#) Initiative, a national effort sponsored by [Lyda Hill Philanthropies®](#) to inspire young girls to pursue STEM careers while creating a culture shift in how the world perceives women in STEM.



Using the IF/THEN® Collection

- Photos
- Videos
- Activities
- Posters
- And more!

ifthencollection.org

CURIOSITY
CAM

DIY MODEL SATELLITE

A satellite is a small object that orbits, or goes around, a planet. Technically, the Earth's moon is a natural satellite. Artificial satellites are objects that are sent into orbit by humans. Even though you can't see them, artificial satellites are constantly orbiting around Earth. Without them, we wouldn't have TV, internet, long distance phone calls, or Global Positioning System (GPS) directions. Scientists also use them to take photos of space, Earth, and weather patterns.


Satellites come in many shapes and sizes depending on what they are used for. But most satellites have an antenna and a power source. The antenna sends and receives information to and from Earth using radio waves. The power source is often solar like solar panels that collect energy from the sun to run the satellite. We'll construct a model of a basic satellite.

Try this experiment build communication satellites for Braille that save your glasses to work!

YOU WILL NEED:

- Scissors
- Cardboard
- (2) Brads
- Tape
- Fencil
- Paper
- Glue
- Printed Template (Page 3)

Print out template. Cut out shapes. Trace & remove into cardboard. Trace & mark with paper. Cut out shapes to make the base, assemble the cardboard squares into the shape of a cube. Secure each seam with tape.



THIS IS WHAT A SCIENTIST LOOKS LIKE™



DR. JAYE GARDNER
ILLUSTRATOR & CANCER BIOLOGIST

Studies the biology behind cancer and uses comic/trading cards to show that science is for everyone.



IF/THEN®
CHAMPIONS
NETWORK

Navigating the IF/THEN® Collection

iftencollection.org/search

- Keyword
(demographic info, topic, theme, etc.)
- Type *(photo, video, activity sheet, etc.)*
- Discipline
(aerospace, earth science, zoology, etc.)
- Location
- Ambassador Name

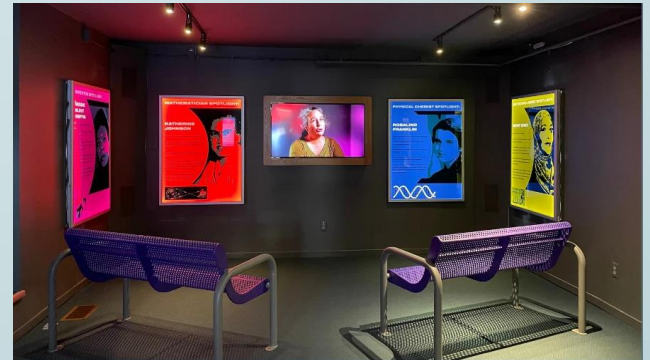
The screenshot shows the IF/THEN Collection search interface. At the top, there is a navigation bar with the IF/THEN Collection logo on the left and 'ABOUT', 'FAQ', and 'FULL COLLECTION' links on the right. A search icon is also present in the top right corner. Below the navigation bar, the word 'Search' is prominently displayed. A purple heading reads 'Use the search box and filters below to narrow your results'. Underneath, there is a search input field with a magnifying glass icon. Below the search field are four filter dropdown menus labeled 'Type', 'Discipline', 'Location', and 'Ambassador Name'. The main content area displays a grid of search results. Each result card includes a thumbnail image, a title starting with 'Mission Unstoppable: DIY...', and a share icon.



IF/THEN® Project Library

- Library of printable exhibit panels, banners, digital media, activities, and other content
- Developed using assets from the IF/THEN® Collection by ASTC-member museums and science centers
- Museums and other educational organizations can adapt and replicate these projects for use in their own institutions

<https://www.astc.org/ifthen/project-library/>



Requesting & Downloading Assets

- Go to <https://www.ifthencollection.org/contact> and complete the Asset Download Request form.
- Submitted requests may take up to 7 business days to process.
- You will receive an email with a link to your collection of assets for downloading.
- Use the same process and code to request files from the Project Library. For the *Asset Title* field, use the project name.



Use the
download code:
**Champions
2024**

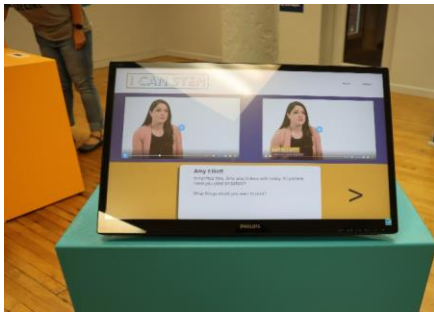


The background is a solid teal color. It features several abstract network diagrams in white and light teal. These diagrams consist of nodes (small circles) connected by lines, some of which are curved or looped, suggesting a complex network structure. The nodes and lines are scattered across the page, with some appearing as partial elements at the edges.

Network Sharing

**Catawba Science Center, Hickory, NC -
Erin Graves, Programs Director**

**National Children's Museum, Washington DC -
Jessica Harvey, Manager of Education**



I CAN STEM



Transitional Exhibit that ran 2021-2023

Incorporated collection assets (video segments, pictures) with local STEM professionals in an exhibit to promote career exploration.

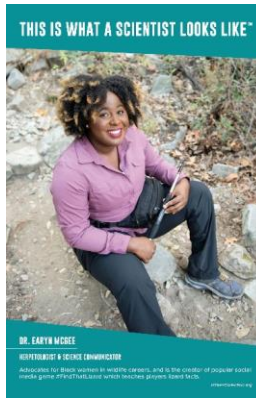


Original pieces remain in room and will be incorporated into future changes to complement local highlighted industries.



Current Usage

Pieces from I Can STEM and new assets decorate our education building - which serves 21,000 school field trip participants and 1,100 campers annually.



We created a series of afterschool programs that utilize Ambassadors (pictures & personal statements) as inspiration for challenge activities. (Earyn's is the most popular!)



national
children's
museum

IF/THEN Experiences: Feb 2020 – Sept 2022



exhibit posters

meet a STEAM expert!



Jasmine Sadler
San Diego, CA

What do I do?
Rocket Scientist,
Dancer, and CEO of
STEAM Collaborative

"Being an African-American woman in engineering energizes me because I provide a diverse perspective, which leads the team to more innovative solutions."

"The Space Shuttle Columbia disaster inspired me to pursue Aerospace Engineering as my way to save the lives of astronauts doing the coolest job in and out of this world!"



- Put your design skills to practice in the **Tinkerers Studio!** How can you communicate your ideas to others using art and design?



Hear more from Jasmine!

scan



live virtual events



Afua Bruce

Catie Cuan

Explore Engineering!

Thursday, February 25 at 11 am EST

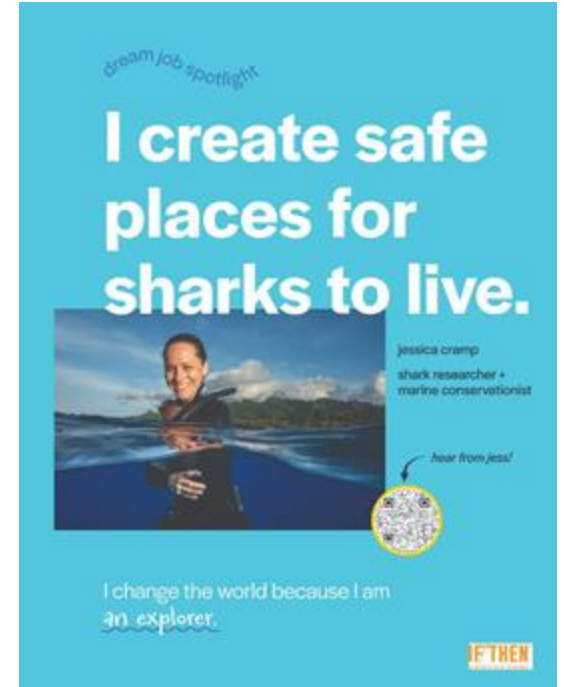
podcast support



The STEAM in Me: Nov 2022 – June 2024



exhibit



dream job
spotlight posters

Girl Scout Day: Ongoing



STEM career badge station



STEM career speaker sessions



The background is a solid teal color. It features several abstract white geometric patterns. These include horizontal and vertical lines, some with small circular dots at their ends. There are also curved lines, some forming arcs or partial circles, and some lines that curve and then straighten out. The overall aesthetic is clean, modern, and technical.

Resources and Upcoming Activities

Resources

Access resources at: <https://ngcproject.org/ifthen-champions-network>

- Links to IF/THEN® Initiative and Collection resources
- Instructions for requesting and downloading assets
- Media and branding guide
- Link to join the LinkedIn Group
- Details about upcoming webinars and an archive of past webinar recordings
- Details about network communications and an archive of past email communications



**IF/THEN®
Collection**

Looking for resources to support gender equity in your classrooms and programs?

The [IF/THEN® Collection](#) is a free digital library with photos, videos, posters, and more, featuring diverse women STEM innovators – all available for educational and other non-commercial use. You'll find thousands of assets showcasing inspiring women whose jobs include training Olympic athletes, creating cosmetics, exploring space, working with animals, and designing everything from buildings and museum exhibits to prosthetics and medical equipment.

HOW TO GET STARTED

If you haven't already, please watch the [IF/THEN Collection](#) video. It's a quick overview of the site and our favorite resources. We recommend these entry points to find plug-and-play resources:

- **Activity Sheets** (www.ifthencollection.org/activity-sheets)
A compilation of all the puzzles, games, and hands-on educator guides and student activity sheets
- **Equity and Inclusion Assets** (www.ifthencollection.org/equity-inclusion)
A curated set of assets for afterschool and summer equity and inclusion
- **Educator Hub** (www.ifthencollection.org/educator-hub)
A one-stop shop with ideas for using the Collection aligned with learning standards

CHAMPIONS NETWORK

Thank you for being part of the [IF/THEN® Champions Network](#), a new network for individuals and ASTC-member organizations interested in championing the [IF/THEN® Collection](#), the largest free resource dedicated to disseminating authentic and reliable images of real women in STEM!

In this email, we are sharing **new opportunities and resources** available to Champions Network members, including the opportunity to engage with other members at the ASTC Annual Conference in September; details about upcoming webinars, and more!



**IF/THEN®
CHAMPIONS
NETWORK**

Upcoming Activities

- **IF/THEN® Activities at the 2024 ASTC Conference in Chicago**
 - Preconference session on Friday, September 27, 9:00am-1:00pm (at capacity)
 - Stop by the booth on Saturday or Sunday!
 - Reception, Sunday, September 29, 4:30-6:00pm
- **IF/THEN® Champions Network Webinar – Gender Equity in STEM**, October 23, 2024 at 11:00 AM PT/2:00 PM ET.
 - 2025 webinar series schedule to be shared in late 2024.



Questions?

You can also email questions to
Emily Early at early@ngcproject.org

